



Product Offering

Our portfolio consists of three product families: MiniLine (25-100W), SilverLine (40-960W) and DIMENSION (80-480W) and fall into one of the following categories:

- Single phase AC/DC Power Supplies
- Three-phase AC/DC Power Supplies
- DC/DC Converter
- Redundant Power Supplies and Modules
- AS-interface® Power Supplies
- Buffer Modules

PULS Power Supplies can be applied in the following industries:

Machine construction, control and automation, plant and systems construction, robotics, drive technology, building automation, lighting technology, cleaning technology, construction machinery, etc.

As the products have been certified to meet a wide range of codes and standards, they can be readily installed throughout the world.

DIMENSION

Choose your product from a wide range of features and options- suitable for almost all applications

- Small in size
- Powerful with generous power reserves
- Simple usage

1-Phase and 3-Phase Power Supplies, DC/DC Converters, Buffer Modules, DC-UPS's, Diode- and Redundancy Modules along with several other supplies designed for specific applications



MiniLine

The compact units with a robust plastic housing for the lower and medium power range

Several output voltages

Installs in seconds

Also with a 400/480V input

Power Supplies and Diode Modules



SilverLine

The classic unit

- Has been proven million of times
- Power range from 40 to 960W
- Rugged metal housing

1-Phase and 3-Phase Power Supplies, DC/DC Converter, Buffer Modules, Redundant Systems , AS-Interface® Power Supplies



DIMENSION U-Series DC-UPS

Bridging of power outages

Back-up for minutes with a DC-UPS utilising only one 12V battery or for seconds with our battery-free buffer module with no battery wear out. This prevents down time, loss of data and long restart sequences.



UB10.241
24V DC-Input, 24V, 10A



UBC10.241 24V DC-Input, 24V, 10A
Battery included

	Output	Description	W x H x D	
UB10.241	24V 10A	GD-UPS Control unit	49 X 124 X 117mm	for 39 to 40Ah batteries
UB10.242	24V 10A	DC-UPS Control unit	49 x 124 x 117mm	for 17 to 130Ah batteries
UB10.245	24V 10A	DC-UPS Control unit, 24V and 12V	49 x 124 x 117mm	Additional 12V output
UB20.241	24V 20A	DC-UPS Control unit	46 x 124 x 117mm	
UBC10.241	24V 10A	DC-UPS with integrated battery	123 x 124 x 119mm	Battery included
UBC10.241-N1	24V 10A	UBC10.241, battery not assembled	123 x 124 x 119mm	Battery not assembled
UZB12.051	12V 5Ah	Battery replacement	90 x 106 x 70mm	
UZB12.071	12V 7Ah	Battery replacement	151 x 98 x 65mm	
UZB12.121	12V 12Ah	Battery replacement	151 x 98 x 98mm	
UZK12.071	12V 7Ah	Battery module with battery	155 x 124 x 112mm	
UZK12.261	12V 26Ah	Battery module with battery	214 x 158 x 179mm	
UZK24.071	24V 7Ah	Battery module with battery	137 x 186 x 120mm	
UZK24.121	24V 12Ah	Battery module with battery	203 x 186 x 120mm	
UZO12.07	12V 7Ah	Battery module without battery	155 x 124 x 112mm	
UZO12.26	12V 26Ah	Battery module without battery	214 x 158 x 179mm	
UZO24.071	24V 7Ah	Battery module without battery	137 x 186 x 120mm	
UZO24.121	24V 12Ah	Battery module without battery	203 x 186 x 120mm	

DIMENSION U-Series Buffer Units



UC10.241
24V DC-Input, 24V, 15A

	Output	Description	W x H x D
UC10.241	24V 15A	KKWS EDLC Buffer module	126 x 124 x 117mm
UC10.242	24V 15A	12kWs EDLC Buffer module	198 x 124 x 117mm
UF20.241	24V 20A	Buffer unit, typ 310ms at 24V, 20A	64 x 124 x 102mm
UF20.481	48V 20A	Buffer unit, typ 150ms at 48V, 20A	64 x 124 x 102mm

DIMENSION Accessories

Mounting brackets

For installation into low profile cabinets or for panel installation where there is no DIN-rail available.



ZM1.UBC10
Wall/Panel Mount Bracket



ZM13.SIDE
Side Mounting Bracket

Description	W x H x D	
J Ķİ ÇĖĖĖĖ	Sensor Board for Battery Modules	110.5 x 23 x 15mm
ZM1.UBC10	Wall mounting bracket UBC10	123 x 156 x 13mm
ZM1.WALL	Wall mounting bracket	8 x 143 x 7mm
ZM2.WALL	Wall / panel mount bracket	18 x 145 x 28mm
ZM11.SIDE	Side mounting bracket CS3, CS5, QS3, YR2, YRM2	145 x 65 x 37mm
ZM12.SIDE	Side mounting bracket Q55	145 x 65 x 44mm
ZM13.SIDE	Side mounting bracket CS10, QS10	145 x 65 x 63mm
ZM14.SIDE	Side mounting bracket QT20, QTD20, UF20	145 x 65 x 76mm
ZM15.SIDE	Side mounting bracket QS20.241, QS20.361, QS20.481	145 x 65 x 85mm

DIMENSION X-Series 3-Phase

3-Phase semi-regulated power supplies

The attractive alternative for supplying DC motors and other non-critical loads. Small compromises in the output voltage regulation and ripple voltage allow a cost efficient design with low power losses.



XT40.241
3-Phase Input, 24V, 40A

Output	POWER	Input	W x H x D
XT40.241 24V 40A	960W	3x 400Vac	96 x 124 x 157mm
XT40.242 24V 40A	960W	3x 480Vac	96 x 124 x 157mm
XT40.361 36V 26.6A	960W	3x 400Vac	96 x 124 x 157mm
XT40.362 36V 26.6A	960W	3x 480Vac	96 x 124 x 157mm
XT40.481 48V 20A	960W	3x 400Vac	96 x 124 x 157mm
XT40.482 48V 20A	960W	3x 480Vac	ĖĖĖ ĶĶĶ ĶĶĶ ĖĖĖ
XT40.721 72V 13.3A	960W	3x 400Vac	96 x 124 x 157mm
XT40.722 72V 13.3A	960W	3x 480Vac	96 x 124 x 157mm

DIMENSION Redundancy Modules

Redundancy modules

For building redundant power supply systems or to isolate sensitive load circuits with or without alarm signals.



YR2.DIODE
10-60V DC-Input, 24V, 20A



YRM2.DIODE
with alarm contacts

Output	DESCRIPTION	W x H x D
YR2.DIODE 24V 20A	Dual Diode Redundancy Module	32 x 124 x 102mm
YR40.241 24V 40A	Dual Diode Redundancy Module	36 x 124 x 127mm
YR40.242 24V 40A	Dual Mosfet Redundancy Module	36 x 124 x 127mm not for QT20, QTD20
YR40.245 24V 40A	Single Mosfet Redundancy Module	46 x 124 x 127mm not for QT40
YR40.482 48V 40A	Dual Mosfet Redundancy Module	46 x 124 x 127mm
YR80.241 24V 80A	Dual Mosfet Redundancy Module	46 x 124 x 127mm
YR80.242 24V 80A	Dual Mosfet Redundancy Module	46 x 124 x 127mm not for QT40
YRH40.241 24V 40A	Dual Mosfet Redundancy Module	36 x 124 x 127mm
YRH40.245 24V 40A	Single Mosfet Redundancy Module	46 x 124 x 127mm
YRH40.481 48V 40A	Dual Mosfet Redundancy Module	46 x 124 x 127mm
YRH80.241 24V 80A	Dual Mosfet Redundancy Module	46 x 124 x 127mm
YR24V 20A	Dual Diode Redundancy Module	32 x 124 x 117mm with alarm contacts

MiniLine

The compact units with a robust plastic housing for the lower and medium power range

- Several output voltages
- Installs in seconds
- Also with a 400/480V input

ML 1-Phase



ML15.051
1-Phase Input, 5V, 3A



ML50.101
Parallel mode

Output	Range	Power	Input	W x H x D
5V 3A	5-5.5Vdc	15W	100-240Vac	22.5 x 75 x 91mm
ML15.121 12V 1.3A	12-15Vdc	15W	100-240Vac	22.5 x 75 x 91mm
ML15.241 24V 0.63A	24-28Vdc	15W	100-240Vac	22.5 x 75 x 91mm
ML30.100 24V 1.3A	24-28Vdc	30W	100-240Vac	45 x 75 x 91mm
ML30.101 5V 5A	5-5.5Vdc	25W	100-240Vac	45 x 75 x 91mm
ML30.102 12V 2.5A	10-12Vdc	30W	100-240Vac	45 x 75 x 91mm
ML30.106 ±12V 2A	±12-15Vdc	36W	100-240Vac	45 x 75 x 91mm
ML30.241 24V 1.3A	24-28Vdc	30W	100-240Vac	22.5 x 75 x 91mm
ML50.100 24V 2.1A	24-28Vdc	50W	100-240Vac	45 x 75 x 91mm
ML50.101 24V 2.1A	24-28Vdc	50W	100-240Vac	45 x 75 x 91mm Parallel mode
ML50.102 12V 4.2A	12-15Vdc	50W	100-240Vac	45 x 75 x 91mm
ML50.105 48V 1.05A	48-56Vdc	50W	100-240Vac	45 x 75 x 91mm
ML50.109 24V 2.1A	24-28Vdc	50W	100-240Vac	45 x 75 x 91mm Conformal coated
ML50.111 24V 2.1A	24-28Vdc	50W	100-240Vac	45 x 75 x 98mm Plug connector
ML60.121 12V 4.5A	12-15Vdc	54W	100-240Vac	45 x 75 x 91mm
ML60.122 12V 4.5A	12-15Vdc	54W	100-240Vac	45 x 75 x 91mm -40°C operation
ML60.241 24V 2.5A	24-28Vdc	60W	100-240Vac	45 x 75 x 91mm
ML60.242 24V 2.5A	24-28Vdc	60W	100-240Vac	45 x 75 x 91mm -40°C operation
ML70.100 24V 3A	24-28Vdc	72W	100-120 / 220-240Vac	45 x 75 x 91mm
ML95.100 24V 3.9A	24-28Vdc	95W	100-120 / 220-240Vac	72.5 x 75 x 103mm NEC Class 2



ML100.100
1-Phase Input, 24V, 4.2A



ML120.CLASS2
1-Phase Input, 24V, 3.8A

	Output		RANGE	Power Input		W X H X D	
ML100.100	24V	4.2A	24-28Vdc	100W	100-120 / 220-240Vac	72.5 x 75 x 103mm	
ML100.102	12V	7.5A	12-15Vdc	90W	100-120 / 220-240Vac	72.5 x 75 x 103mm	
ML100.105	48V	2.1A	48-56Vdc	100W	100-120 / 220-240Vac	72.5 x 75 x 103mm	
ML100.109	24V	4.2A	24-28Vdc	100W	100-120 / 220-240Vac	72.5 x 75 x 103mm	Conformal coated
ML120.241	24V	5A	24-28Vdc	120W	100-120 / 220-240Vac	72.5 x 75 x 103mm	
ML120.244	24V	5A	24Vdc	120W	200-240Vac	72.5 x 75 x 103mm	
ML120.CLASS2	24V	3.8A	24Vdc	91.2W	100-120 / 220-240Vac	72.5 x 75 x 103mm	

MiniLine ML 2-Phase



ML90.200
2-Phase Input, 24V, 3.75A



ML100.200
2-Phase Input, 24V, 4.2A

	Output		RANGE	Power Input		W X H X D	
ML90.200	24V	3.75A	24-28Vdc	90W	2x 380-480Vac	72.5 x 75 x 103mm	NEC Class 2
ML100.200	24V	4.2A	24-28Vdc	100W	2x 380-480Vac	72.5 x 75 x 103mm	

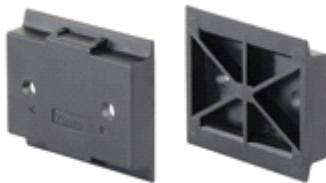
PULS

The World of DIN-Rail Power Supplies

POWER SUPPLIES**MLY Redundancy Module**

MLY02.100
10-60V DC-Input, 24V, 10A

	OUTPUT		DESCRIPTION	W x H x D	W x H x D
MLY02.100	24V	10A	Decoupling module 10-60V, 2x5A or 1x10A	45 x 75 x 91mm	45 x 75 x 91mm
MLY10.241	24V	10A	Decoupling module 10-60V, 2x5A or 1x10A	45 x 75 x 91mm	45 x 75 x 91mm

Accessories

ZM3.WALL
Wall/Panel Mount Bracket

L:	DESCRIPTION		
ZM3.WALL	Wall / panel mount bracket for 45mm wide MiniLine units, bulk package with 25 pcs	45 x 35 x 7.5mm	

SilverLine

The classic unit

- Has been proven million of times
- Power range from 40 to 960W
- Rugged metal housing

SL 1-Phase

SL2.100
1-Phase Input, 24V, 2.5A



SL5.100
1-Phase Input, 24V, 5A



SL4.100
1-Phase Input, 24V, 4A

	Output		RANGE	Power Input		W X H X D	
SL2.100	24V	2.5A	24Vdc	60W	100-120 / 200-240Vac	49 x 124 x 102mm	
SL2.103	12V	3A	12-15Vdc	40W	100-120 / 200-240Vac	49 x 124 x 102mm	
SL4.100	24V	4A	24Vdc	96W	100-120 / 200-240Vac	64 x 124 x 103mm	NEC Class 2
SL5.100	24V	5A	24Vdc	120W	100-120 / 200-240Vac	64 x 124 x 102mm	
SL5.102	24V	5A	24-28Vdc	120W	100-120 / 200-240Vac	64 x 124 x 102mm	Adjustable output voltage
SL5.105	24V	5A	24-28Vdc	120W	100-120 / 200-240Vac	64 x 124 x 102mm	Passive PFC



SL10.100
1-Phase Input, 24V, 10A



SL20.115
Remote shut-down



SL30.100
1-Phase Input, 24V, 30A

	Output		RANGE	Power Input		W X H X D	
SL10.100	24V	10A	24-28Vdc	240W	100-120 / 210-240Vac	120 x 124 x 102mm	
SL10.101	48V	5A	48-56Vdc	240W	100-120 / 210-240Vac	120 x 124 x 102mm	
SL10.104	12V	15A	12-15Vdc	180W	100-120 / 210-240Vac	120 x 124 x 102mm	
SL10.105	24V	10A	24-28Vdc	240W	100-120 / 210-240Vac	120 x 124 x 102mm	Passive PFC
SL10.106	48V	5A	48-56Vdc	240W	100-120 / 210-240Vac	120 x 124 x 102mm	Passive PFC
SL20.100	24V	20A	24-28Vdc	480W	200-240Vac	220 x 124 x 102mm	
SL20.101	24V	20A	24-28Vdc	480W	200-240Vac	220 x 124 x 102mm	Passive PFC
SL20.110	24V	20A	24-28Vdc	480W	100-120 / 220-240Vac	220 x 124 x 102mm	
SL20.111	24V	20A	24-28Vdc	480W	100-120 / 220-240Vac	220 x 124 x 102mm	
SL20.112	36V	13.3A	36-43Vdc	480W	100-120 / 220-240Vac	220 x 124 x 102mm	
SL20.113	48V	10A	48-56Vdc	480W	100-120 / 220-240Vac	220 x 124 x 102mm	
SL20.115	24V	20A	24-28Vdc	480W	100-120 / 220-240Vac	220 x 124 x 102mm	Remote shut-down
SL30.100	24V	30A	24-28Vdc	720W	208-240Vac	240 x 124 x 112mm	

SL 3-Phase



SL5.300
3-Phase Input, 24V, 5A



SL10.305
3-Phase Input, 48V, 5A



SL40.301
Various signals included

	Output		RANGE	Power Input		W X H X D
SL5.300	24V	5A	24-28Vdc	120W	3x 400-500Vac	73 x 124 x 117mm
SL10.300	24V	10A	24-28Vdc	240W	3x 400-500Vac	89 x 124 x 117mm
SL10.305	48V	5A	48-52Vdc	240W	3x 400-500Vac	89 x 124 x 117mm
SL10.309	24V	10A	24-28Vdc	240W	3x 400-500Vac	89 x 124 x 117mm Conformal coated
SL20.300	24V	20A	24-28Vdc	480W	3x 400Vac	220 x 124 x 102mm
SL20.301	24V	20A	24-28Vdc	480W	3x 480Vac	220 x 124 x 102mm
SL20.303	48V	10A	48-56Vdc	480W	3x 400Vac	220 x 124 x 102mm
SL20.310	24V	20A	24-28Vdc	480W	3x 400-500Vac	150 x 124 x 121mm
SL30.300	24V	30A	24-28Vdc	720W	3x 400-500Vac	240 x 124 x 112mm
SL40.300	24V	40A	24-28Vdc	960W	3x 400-500Vac	275 x 124 x 117mm
SL40.301	24V	40A	24-28Vdc	960W	3x 400-500Vac	275 x 124 x 117mm Various signals included

SLA AS-INTERFACE



SLA3.100
1-Phase Input, 30V, 2.8A



SLA8.100
1-Phase Input, 30V, 8A

	OUTPUT		RANGE	Power Input		W X H X D
SLA3.100	30V	2.8A	30.5Vdc	85W	100-120 / 220-240Vac	49 x 124 x 102mm for AS-Interface*
SLA4.100	30V	4A	30.5Vdc	120W	100-120 / 220-240Vac	73 x 124 x 102mm for AS-Interface*
SLA8.100	30V	8A	30.5Vdc	240W	100-120 / 220-240Vac	91 x 124 x 102mm for AS-Interface*
SLA8.100	30V	8A	30.5Vdc	240W	3x 400-500Vac	129 x 124 x 117mm for AS-Interface*
SLA4.100	30V	4A	30.5Vdc	120W	24Vdc	40 x 124 x 102mm for AS-Interface*

SLD DC/DC Converter



SLD2.100
24V DC-Input, 5V, 8A

	Output		RANGE	Power Input		W X H X D
SLD2.100	5V	8A	5-5.5Vdc	40W	24Vdc	49 x 124 x 102mm

SLR REDUNDANCY



SLR01
24V DC-Input, 24V, 40A



SLR2.100
1-Phase Input, 24V, 2.5A

	Output		DESCRIPTION	W x H x D
SLR01	24V	40A	Decoupling module 24-28V, 1x40A	48 x 124 x 117mm
SLR02	24V	30A	Decoupling module 24-28V, 2x30A	48 x 124 x 102mm
SLR2.100	24V	2.5A	Redundancy power supply	49 x 124 x 102mm Redundancy unit
SLR5.100	24V	5A	Redundancy power supply	64 x 124 x 102mm Redundancy unit
SLR10.100	24V	10A	Redundancy power supply	120 x 124 x 102mm Redundancy unit
SLR10.108	24V	8A	Redundancy power supply	120 x 124 x 102mm Redundancy unit

SLV BUFFER UNIT



	OUTPUT		DESCRIPTION	W x H x D
SLV20.200	24V	20A	Buffer unit, typ 310ms at 24V, 20A	64 x 124 x 102mm

SLZ Accessories



SLZ02
Wall/Panel Mount Bracket



SLZ12
Adapter for S7-300 Rail

	Description	W X H X D
SLZ02	Adaptor for wall mounting (SilverLine)	30 x 42 x 14mm
SLZ10	Mounting adapter for S7-300 rail	42 x 125 x 18mm
SLZ11	Mounting adapter for S7-300 rail	51 x 125 x 18mm
SLZ12	Mounting adapter for S7-300 rail	66 x 125 x 18mm
SLZ13	Mounting adapter for S7-300 rail	90 x 125 x 18mm
SLZ14	Mounting adapter for S7-300 rail	121 x 125 x 18mm